

FLASH CARD FACTORY v1.0.0.0 USER MANUAL

This user manual has been prepared for the purpose to tell you how you can use the Flash Card Factory software and take maximum efficiency from this simple but powerful tool. I also told about possible problems that you can face and their solutions so please read the manual very carefully before using the programme. I hope you will enjoy to use it.

1 - Installation of the programme:

Download the Flash Card Factory Software from below link:

<http://www.new-languages.com/View-document-details/Flash-Card-Factory-Programme.html>

The file provided for downloading above (SETUPFCF.EXE) is a self-extracting, self-installing zip file. After downloading it to your system:

- Run SETUPPAD.EXE to start setup.
- Follow the setup instructions on your screen.

Important! Do not change the programme directory during the installation! Default directory is : C:\Program Files\Flash Card Factory

2 - How to load databases ?

Go to following address and choose the database you want to study ,download it and run the file it will automatically load the database to the programme directory.

<http://www.new-languages.com/newlanguage/Databases/vocabulary-databases.html>

Important! If this is first time you are updating database ignore this message. But if you already customized your databases and added new words and categories than backup the current file(C:\Program Files\Flash Card Factory\DATA) when you will execute the new file it will overwrite to current one! So you will lose your all datas. But if you take the back up than when you want to use it again only what you need to do is rename it "DATA" and paste it again to programme directory.

3 - How to use the programme ?

3.1– Main menu screen and buttons :



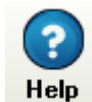
Flash Cards : Opens flash cards and shows them as flash card and list view



Dictionary : Opens dictionary.



Category : Opens category lists ,you can add/delete/update categories.



Help : Opens help menu.

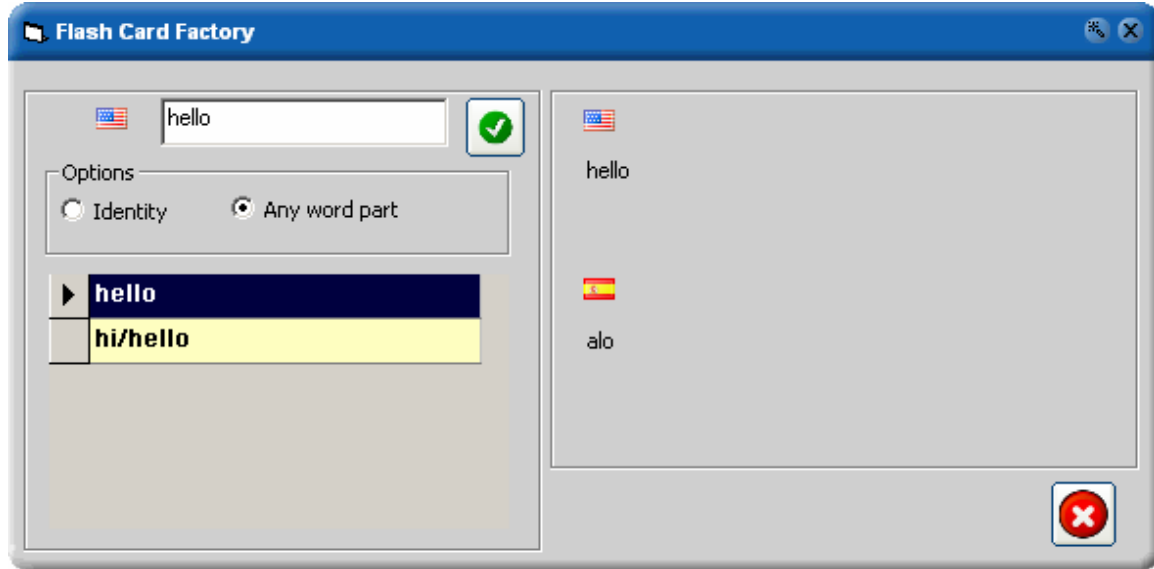


About :Opens form related with author and licence.



Exit : Exit from the programme

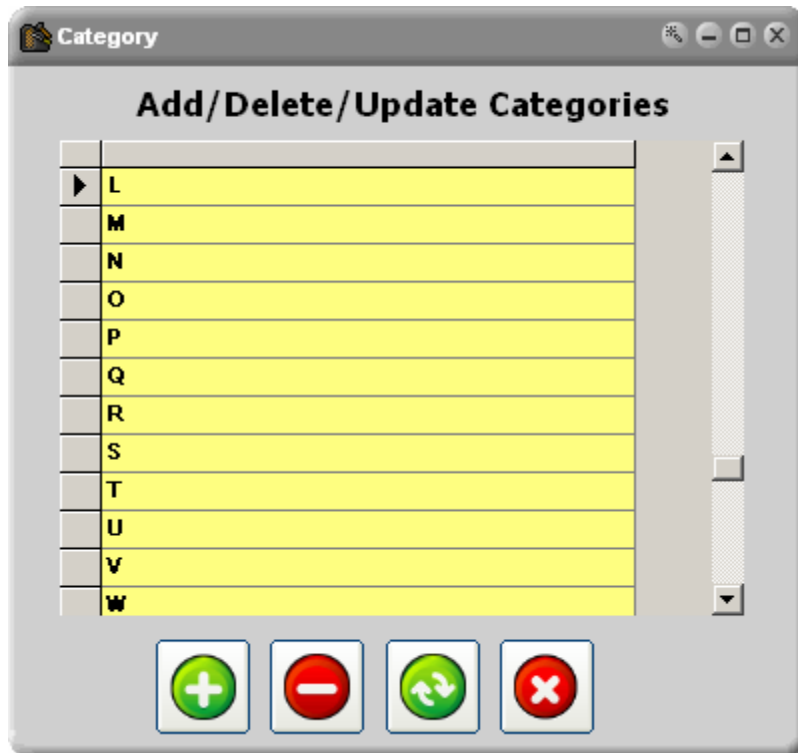
3.2 – Dictionary :



You can search all the words in your database in a dictionary view. So if you add/delete or update words in flash cards screen then you can immediately see the changes in the dictionary view. You can create your customized dictionary easily. You can make the search according to 2 criteria. First one is “identity” if you choose this option exact results which match with the word in search box will be displayed. Second is “Any word part” if you choose this option all results which includes the word in your search box will be displayed.

3.3- Category List:

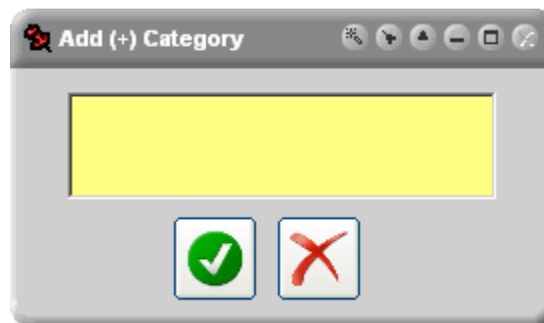
Logic of the software is very simple there are main categories and under each categories there are flash cards. Default is coming with alphabet letters but you can fully customize it. Just think you are studying in a course and you have finished your first Lesson , so click on categories button on main menu(initial screen) and add Lesson1 as new category so you will see Lesson1 as a new category on your list , or you want to categorize the words like car parts,human body,family relations etc..go to categories section enter new categories and then you can add/delete/update new words for the categories you created.Use your imagination!!You can do lots of things and can take the benefit of it!



3.3.1 - Add new category:



This button adds a new category. You will be taken to the following screen put your new category name and click on check button. New record will be added.



3.3.2- Delete existing category:



Delete button will delete the category you selected. Choose a category and highlight it as below screen

-
F
G
H

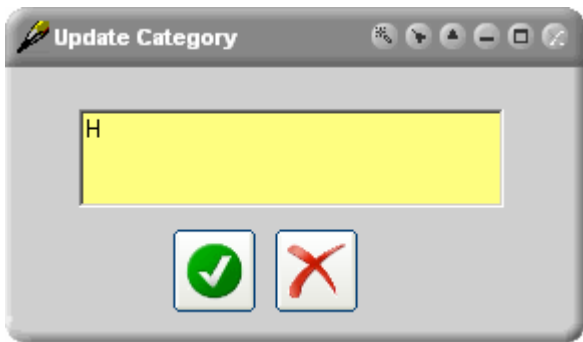
Then press to the delete button. You will be asked if you are sure to delete the record, choose "yes" and confirm the deletion. Category will be removed from database.

3.3.3- Update existing category:



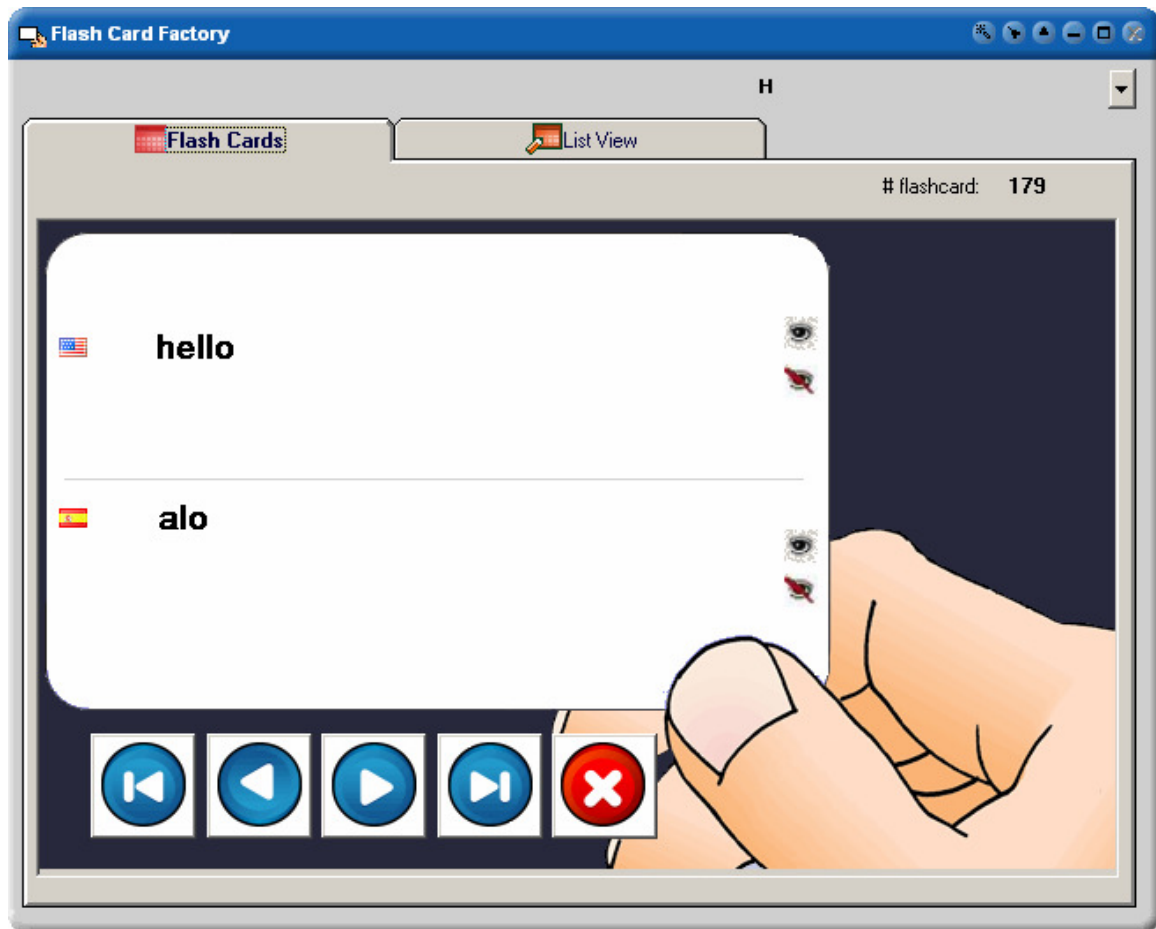
There are 2 ways to update a category, first one is select and highlight the category as told above then click update button.

Or select the category and double click on it. Both way will take you to update screen as below, from the coming screen make the update you want (you can change the category) and confirm it by clicking to check button.

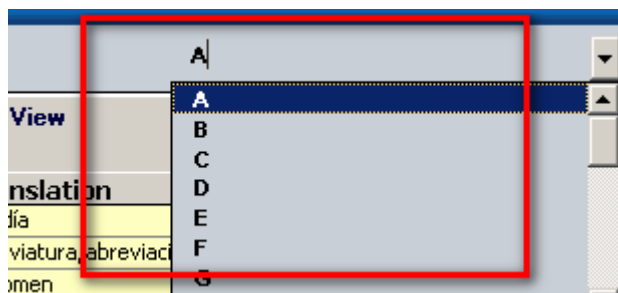


3.4- Flash Cards and List views:

3.4.1- Flash Card View :



3.4.1.1- Choose Category:



Choose one of the categories from top right corner of the screen. Default is coming with alphabet letters but you can fully customize it from categories menu as told before.

3.4.1.2- Navigation buttons :



Use the above buttons for going to first , previous ,next or the last flash card in the chosen category.

3.3.1.3- Show or Hide Buttons:



You can use these buttons for making the words visible or invisible. This can be useful for you if you want to make exercises ,just hide the words or their translations as you wish and try to guess what were they. So after making more and more practice you will see that you will start to remember them. Unfortunately there is no easy way to learn a language without any exercise so you need to make as many exercise as you can able. This visual learning system will help you a lot. You will see.

3.4.2- List View:

The screenshot shows the 'Flash Card Factory' application window in 'List View' mode. The window title is 'Flash Card Factory' and it has a standard Windows-style title bar with minimize, maximize, and close buttons. Below the title bar, there are two tabs: 'Flash Cards' and 'List View', with 'List View' being the active tab. The main content area displays a table with two columns: 'Word' and 'Translation'. The table contains the following entries:

Word	Translation
hear	oír
hearsay/rumor/rumour	rumor
heart	corazón
heart	corazón
heart attack	infarto/ataque cardíaco
heat	calor
heavy	pesado
hebrew	hebreo
hedgehog	erizo
heel	talón
height	altura
height/peak/summit/zenith	apogeo/cima/cumbre
helicopter	helicóptero
hell	infierno
hello	alo
helmet	casco
help	socorro
help	ayuda

At the bottom of the window, there is a toolbar with seven icons: a green plus sign, a green circular arrow, a red minus sign, a blue question mark, a blue house icon, a blue information icon, and a red X icon.

Choose a category and you will see all flash cards existing under chosen category than choose a row and go to flash card view ,you will see the selected row as flash card.

On this screen you can add/delete and update the flash cards.It is very easy.

3.4.2.1- Adding a new flash card:



This button adds a new flash card .Below screen will come .Choose your category,word ,its translation and click to check button.

3.4.2.2- Updating an existing flash card:



There are 2 ways to update a record ,first one is select and highlight the record you want to change than click update button

helicopter	helicoptero
hell	infierno
hello	alo
helmet	casco

Or select the record and and double click on it . Both way will take you to update

screen from the coming screen make the update you want(you can change the word,its translation or category) and confirm it by clicking to check button.

3.4.2.3- Delete an existing flash card:



Delete button will delete the flash card you selected. Choose a flash card as told on above highlight it then press to the delete button. You will be asked if you are sure to delete the record, choose “yes” and confirm the deletion. Flash card will be deleted from database.

4- Help :

By clicking the help button on main menu you will be taken to help menu.

If you know any language which is not already listed in help menu, then you can support us. This may take your little time but at the end will be very useful for lots of people who will use it. Please get in contact with me from following email: umutozcan@new-languages.com, and write the language you want to translate in. I will get in contact with you and will discuss the further steps. After all, translations will be published with their author's names in next programme release both in programme itself and website. Thank you very much in advance for your contribution.

5- About

This programme and all upgrades are free-licensed software for the all users. I made it free licence because I believe in information is a universal right for everybody !Not only for the people who have money!

If you like the programme, using it and have enough economic power to make a donation, I will be appreciated if you can do it. Amount is not important! I can create better and more free products for the community with your donations. With your contribution you can help other people's educations. Donations are being processed by “paypal” in a high secure line. Simply you can click on the button name “donate” or you can visit the web site <http://www.new-languages.com> and click the same button on the site. Both will take you to donation page. Thank you very much in advance.



6- Troubleshoot :

Question : I want to to enter new flash cards or new categories. But my characters are not shown on the views Instead of them there are “????” marks.Why?

Answer : If microsoft office is already installed on your computer you will not get this error.This is because of unicode character problem.Most of the users will not face but the ones who want to display for example chinese characters in a microsoft windows polish version installed without microsoft office will face with this type of problem.So first please check in your computer and put some special characters for your language and check their visibility.If you do not have any problem just you do not need but if you have above problem as well so what you need to do is simple : install Microsoft ActiveX Control Pad , it is free and you can download from Microsoft’s website.

Download Microsoft ActiveX Control Pad 1.0 release (2.7 MB):

<http://download.microsoft.com/download/activexcontrolpad/install/4.0.0.950/win98mexp/en-us/setuppad.exe>

IMPORTANT! Japanese users, please install the following additional required component:Download additional Japanese component (134 KB):

<http://download.microsoft.com/download/activexcontrolpad/install/4.71.30.1/win98mexp/en-us/setupjpn.exe>

Setup instructions:

The file provided for downloading above (SETUPPAD.EXE) is a self-extracting, self-installing zip file. After downloading it to your system:

- Run SETUPPAD.EXE to start setup.
- Follow the setup instructions on your screen.

That’s it !! Enjoy it !!

For your possible contributions,problems,complaints and wishes please get in contact with me by using forum.<http://new-languages.com/forum> or by email:umutozcan@new-languages.com

With small contributions you can create big impacts!!Please join to this open project.